

激光透镜（聚焦镜）

本公司生产各种高损伤阈值透镜，根据透镜的面型有包括平凸，双凸，平凹，双凹，弯月等等。透镜在光学系统中的作用分为三种：聚焦、耦合、准直。

1. 聚焦镜片：聚焦镜被广泛用于激光加工（如：切割、打标、焊接、雕刻等）和各种激光系统中。

2. 耦合透镜：一束激光要想用光纤传播，要把激光束通过镜片准直，聚焦到光纤内。

3. 准直镜片：被用在光束传递系统中，以维持激光谐振腔和聚焦光学元件之间的光束的准直性。广泛应用于激光打标机、激光切割机、激光焊接机、光纤切割机、手持焊接机等激光加工领域。

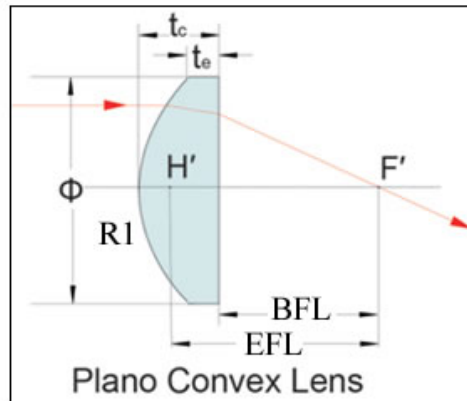
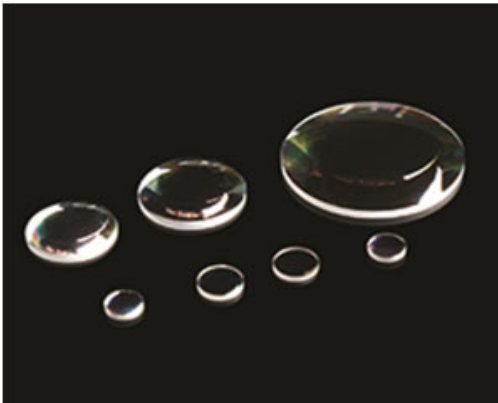
主要技术参数：

材料	K9/石英	尺寸公差	+0.1/-0.1mm
厚度公差	±0.1mm	焦距公差	±2%@1064nm
光洁度	40/20	面型	$\lambda/4@632.8\text{nm}$
有效孔径	>90%	平行度	$\leq 1'$
镀膜	介质膜	侧边	$< 0.2 \times 45^\circ$

常用规格

直径 mm	焦距 mm	面型	激光波长 nm
18	55/80/150	双凸	1050-108
20	30/35/40/50/60/70/80/100/120/150/200	平凸/双凸	1050-108
25	70/100/120/150	平凸/双凸	1050-108
15.4	70/100/120/150	平凸/双凸	1050-108
28	80/120	平凸	1064
30	40/50/60/70/75/90/100/120/150/200/250/300	平凸/双凸/弯月/组合	1064/694.3
34	80/100	平凸/双凸	1064
36	55/70/80/100/120/150/180/220	平凸/双凸/弯月/组合	1064/915/980
40	100/120/150/180/300	平凸/双凸/弯月	1050-180
41.5	80/100/120/150/180	双凸/弯月/组合	1050-180
42	80/120/200	双凸/弯月/组合	1050-180
50	100/120/150/180/200	双凸/弯月/组合	1050-180
50.8	150/250	平凸/双凸	1050-180
12.7	-15/-30/-47/-70	平凹	1050-180
16	-20/-30/-37/-47/-70	平凹/双凹	1050-180
20	-30/-100	平凹	1050-180

1. BK7 平凸透镜



- 材料: BK7
- 直径公差: $+0/-0.1\text{mm}$
- 厚度公差: $\pm 0.2\text{mm}$
- 平整度: $\lambda/4 @ 632.8\text{nm}$
- 有效孔径: 90%
- 焦距公差: $\pm 1\%$
- 光洁度: 40-20
- 侧边: $< 0.25\text{mm} \times 45$
- 设计波长: 587.6nm
- 中心度: 3 arc min
- 常用镀膜波长: 405nm, 468nm, 532nm, 650nm, 808nm, 980nm, 1064nm, 1319nm 和 1550nm

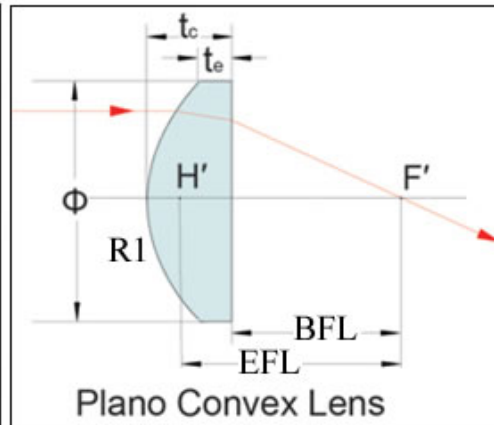
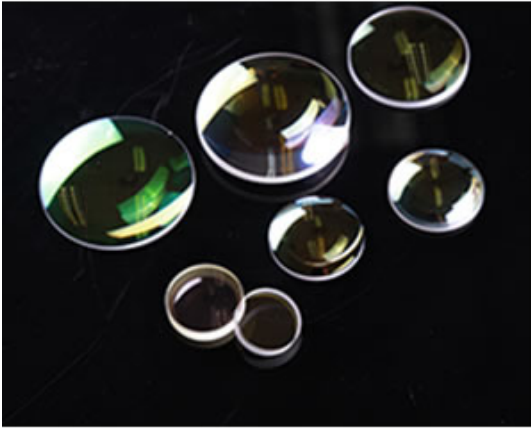
参数表符号: OD 外径; EFL 有效焦距; BFL 后焦距; R1 和 R2 曲率半径; TC 中心厚度; TE 边缘厚度。所有长度单位是 mm, 产品型号中 XXXX 指激光波长 (单位是 nm)。

产品型号	OD	EFL	BFL	R1	TC	TE
STJ-XXXX-L4B-06-010	6	10	8.02	5.16	3.00	2.04
STJ-XXXX-L4B-06-015	6	15	13.02	7.76	3.00	2.40
STJ-XXXX-L4B-06-020	6	20	18.04	10.43	3.00	2.56
STJ-XXXX-L4B-06-025	6	25	23.02	12.90	3.00	2.65
STJ-XXXX-L4B-06-030	6	30	28.02	15.50	3.00	2.71
STJ-XXXX-L4B-06-036	6	36	34.02	18.62	3.00	2.76
STJ-XXXX-L4B-06-048	6	48	46.02	24.82	3.00	2.82
STJ-XXXX-L4B-06-060	6	60	58.02	31.01	3.00	2.85
STJ-XXXX-L4B-10-015	10	15	12.37	7.76	4.00	2.18
STJ-XXXX-L4B-10-020	10	20	17.71	10.43	3.50	2.22
STJ-XXXX-L4B-10-025	10	25	22.69	12.90	3.50	2.49
STJ-XXXX-L4B-10-030	10	30	28.02	15.50	3.00	2.17
STJ-XXXX-L4B-10-040	10	40	38.02	20.70	3.00	2.39
STJ-XXXX-L4B-10-050	10	50	48.35	25.84	2.50	2.01
STJ-XXXX-L4B-10-075	10	75	73.35	38.73	2.50	2.18
STJ-XXXX-L4B-15-020	15	20	16.41	10.43	5.50	2.32

STJ-XXXX-L4B-15-025	15	25	21.70	12.90	5.00	2.60
STJ-XXXX-L4B-15-030	15	30	27.03	15.50	4.50	2.56
STJ-XXXX-L4B-15-040	15	40	37.37	20.70	4.00	2.59
STJ-XXXX-L4B-15-060	15	60	57.70	31.14	3.50	2.58
STJ-XXXX-L4B-20-030	20	30	26.04	15.50	6.00	2.34
STJ-XXXX-L4B-20-040	20	40	36.71	20.70	5.00	2.42
STJ-XXXX-L4B-20-050	20	50	47.03	25.84	4.50	2.49
STJ-XXXX-L4B-20-080	20	80	77.69	41.34	3.50	2.27
STJ-XXXX-L4B-25-030	25	30	24.39	15.50	8.50	2.17
STJ-XXXX-L4B-25-040	25	40	35.72	20.70	6.50	2.30
STJ-XXXX-L4B-25-050	25	50	46.37	25.84	5.50	2.28
STJ-XXXX-L4B-25-070	25	70	67.03	36.14	4.50	2.27
STJ-XXXX-L4B-25-100	25	100	97.36	51.69	4.00	2.47
STJ-XXXX-L4B-25-150	25	150	147.69	77.52	3.50	2.49
STJ-XXXX-L4B-30-040	30	40	34.40	20.70	8.50	2.06
STJ-XXXX-L4B-30-050	30	50	45.39	25.84	7.00	2.20
STJ-XXXX-L4B-30-070	30	70	66.04	36.14	6.00	2.74
STJ-XXXX-L4B-30-100	30	100	96.70	51.69	5.00	2.78
STJ-XXXX-L4B-30-150	30	150	147.36	77.52	4.00	2.53
STJ-XXXX-L4B-30-180	30	180	177.69	93.02	3.50	2.28
STJ-XXXX-L4B-36-050	36	50	43.74	25.84	9.50	2.20
STJ-XXXX-L4B-36-080	36	80	75.38	41.34	7.00	2.88
STJ-XXXX-L4B-36-100	36	100	96.05	51.69	6.00	2.76
STJ-XXXX-L4B-36-120	36	120	116.70	62.00	5.00	2.33
STJ-XXXX-L4B-36-150	36	150	147.03	77.52	4.50	2.38
STJ-XXXX-L4B-36-180	36	180	177.36	93.02	4.00	2.24
STJ-XXXX-L4B-36-220	36	220	217.37	113.83	4.00	2.57
STJ-XXXX-L4B-40-040	40	50	42.42	25.84	11.50	2.02
STJ-XXXX-L4B-40-080	40	80	75.05	41.34	7.50	2.34
STJ-XXXX-L4B-40-100	40	100	95.72	51.69	6.50	2.47
STJ-XXXX-L4B-40-120	40	120	116.04	62.00	6.00	2.69
STJ-XXXX-L4B-40-150	40	150	146.70	77.52	5.00	2.38
STJ-XXXX-L4B-40-180	40	180	177.03	93.02	4.50	2.32
STJ-XXXX-L4B-40-220	40	220	217.37	113.83	4.00	2.23
STJ-XXXX-L4B-42-060	42	60	52.78	31.14	11.00	2.85
STJ-XXXX-L4B-42-080	42	80	74.40	41.34	8.50	2.77
STJ-XXXX-L4B-42-100	42	100	95.39	51.69	7.00	2.54
STJ-XXXX-L4B-42-120	42	120	116.04	62.00	6.00	2.34
STJ-XXXX-L4B-42-180	42	180	175.65	77.52	5.50	2.60
STJ-XXXX-L4B-42-220	42	220	215.97	93.02	5.00	2.60
STJ-XXXX-L4B-42-300	42	300	295.96	113.83	4.50	2.55
STJ-XXXX-L4B-50-075	50	75	67.41	38.73	11.50	2.35
STJ-XXXX-L4B-50-100	50	100	94.07	51.69	9.00	2.55
STJ-XXXX-L4B-50-125	50	125	120.06	64.60	7.50	2.47
STJ-XXXX-L4B-50-150	50	150	145.39	77.52	7.00	2.86

STJ-XXXX-L4B-50-175	50	175	171.04	90.44	6.00	2.48
STJ-XXXX-L4B-50-220	50	220	216.38	113.83	5.50	2.72
STJ-XXXX-L4B-50-300	50	300	297.03	155.04	4.50	2.47
STJ-XXXX-L4B-50-400	50	400	397.36	206.67	4.00	2.48

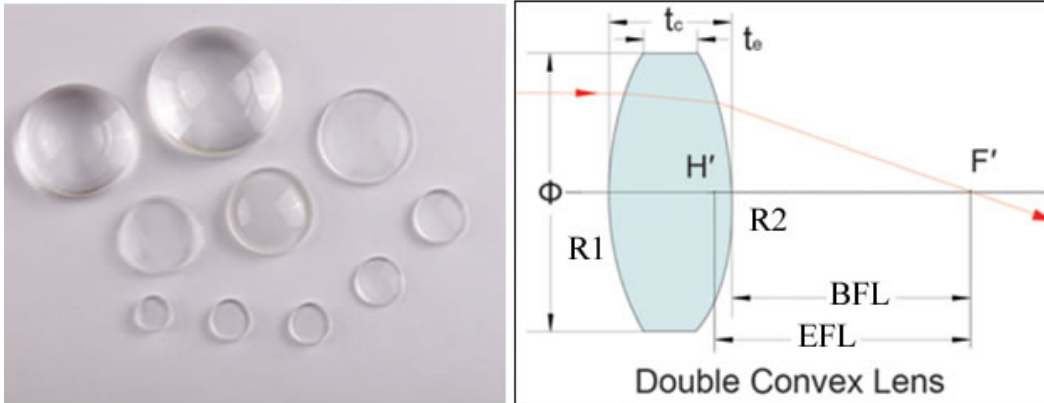
2. 石英平凸透镜



Part No.	OD	EFL	BFL	R1	TC	TE
STJ-XXXX-L4J-06-010	6	10	7.62	4.61	3.50	2.39
STJ-XXXX-L4J-06-015	6	15	12.94	6.86	3.00	2.31
STJ-XXXX-L4J-06-020	6	20	17.95	9.19	3.00	2.50
STJ-XXXX-L4J-06-025	6	25	22.95	11.48	3.00	2.60
STJ-XXXX-L4J-06-030	6	30	27.94	13.76	3.00	2.67
STJ-XXXX-L4J-06-036	6	36	33.95	16.52	3.00	2.73
STJ-XXXX-L4J-06-048	6	48	45.95	22.03	3.00	2.79
STJ-XXXX-L4J-06-060	6	60	58.29	27.54	2.50	2.34
STJ-XXXX-L4J-10-015	10	15	11.91	6.86	4.50	2.34
STJ-XXXX-L4J-10-020	10	20	17.26	9.19	4.00	2.52
STJ-XXXX-L4J-10-025	10	25	22.60	11.48	3.50	2.35
STJ-XXXX-L4J-10-030	10	30	27.61	13.76	3.50	2.56
STJ-XXXX-L4J-10-040	10	40	37.94	18.33	3.00	2.31
STJ-XXXX-L4J-10-050	10	50	47.95	22.98	3.00	2.45
STJ-XXXX-L4J-10-075	10	75	72.94	34.36	3.00	2.63
STJ-XXXX-L4J-15-020	15	20	15.55	9.19	6.50	2.62
STJ-XXXX-L4J-15-025	15	25	21.23	11.48	5.50	2.71
STJ-XXXX-L4J-15-030	15	30	26.57	13.76	5.00	2.78
STJ-XXXX-L4J-15-040	15	40	37.26	18.33	4.00	2.40
STJ-XXXX-L4J-15-060	15	60	57.60	27.54	3.50	2.46
STJ-XXXX-L4J-20-030	20	30	25.20	13.76	7.00	2.69
STJ-XXXX-L4J-20-035	20	35	30.89	16.05	6.00	2.50
STJ-XXXX-L4J-20-040	20	40	36.23	18.33	5.50	2.53
STJ-XXXX-L4J-20-050	20	50	46.58	22.98	5.00	2.71
STJ-XXXX-L4J-20-080	20	80	77.25	36.64	4.00	2.61

STJ-XXXX-L4J-25-030	25	30	22.80	13.76	10.50	2.49
STJ-XXXX-L4J-25-040	25	40	34.86	18.33	7.50	2.58
STJ-XXXX-L4J-25-050	25	50	45.90	22.98	6.00	2.31
STJ-XXXX-L4J-25-070	25	70	66.58	32.14	5.00	2.47
STJ-XXXX-L4J-25-100	25	100	96.92	45.85	4.50	2.76
STJ-XXXX-L4J-25-150	25	150	147.61	68.80	3.50	2.35
STJ-XXXX-L4J-30-040	30	40	33.14	18.33	10.00	2.21
STJ-XXXX-L4J-30-050	30	50	44.53	22.98	8.00	2.43
STJ-XXXX-L4J-30-070	30	70	65.89	32.14	6.00	2.28
STJ-XXXX-L4J-30-100	30	100	96.57	45.85	5.00	2.48
STJ-XXXX-L4J-30-150	30	150	147.26	68.80	4.00	2.34
STJ-XXXX-L4J-30-180	30	180	177.26	82.53	4.00	2.63
STJ-XXXX-L4J-36-050	36	50	42.48	22.98	11.00	2.30
STJ-XXXX-L4J-36-080	36	80	74.99	36.64	7.30	2.57
STJ-XXXX-L4J-36-100	36	100	95.89	45.85	6.00	2.32
STJ-XXXX-L4J-36-120	36	120	116.23	55.00	5.50	2.47
STJ-XXXX-L4J-36-150	36	150	146.57	68.80	5.00	2.60
STJ-XXXX-L4J-36-180	36	180	176.92	82.53	4.50	2.51
STJ-XXXX-L4J-36-220	36	220	217.26	100.89	4.00	2.38
STJ-XXXX-L4J-40-050	40	50	40.42	22.98	14.00	2.33
STJ-XXXX-L4J-40-080	40	80	74.17	36.64	8.50	2.56
STJ-XXXX-L4J-40-100	40	100	95.21	45.85	7.00	2.41
STJ-XXXX-L4J-40-120	40	120	115.89	55.00	6.00	2.23
STJ-XXXX-L4J-40-150	40	150	146.23	68.80	5.50	2.53
STJ-XXXX-L4J-40-180	40	180	176.57	82.53	5.00	2.54
STJ-XXXX-L4J-40-220	40	220	216.92	100.89	4.50	2.50
STJ-XXXX-L4J-42-080	42	80	73.82	36.64	9.00	2.38
STJ-XXXX-L4J-42-100	42	100	94.79	45.85	7.60	2.51
STJ-XXXX-L4J-42-120	42	120	115.20	55.00	7.00	2.83
STJ-XXXX-L4J-42-150	42	150	145.89	68.80	6.00	2.72
STJ-XXXX-L4J-42-180	42	180	176.57	82.53	5.00	2.28
STJ-XXXX-L4J-42-220	42	220	216.85	100.89	4.60	2.39
STJ-XXXX-L4J-42-300	42	300	297.26	137.72	4.00	2.39
STJ-XXXX-L4J-50-125	50	125	119.17	57.31	8.50	2.76
STJ-XXXX-L4J-50-150	50	150	145.20	68.80	7.00	2.30
STJ-XXXX-L4J-50-175	50	175	170.54	80.25	6.50	2.51
STJ-XXXX-L4J-50-220	50	220	215.89	100.89	6.00	2.85
STJ-XXXX-L4J-50-300	50	300	296.58	137.72	5.00	2.71
STJ-XXXX-L4J-50-400	50	400	397.26	183.68	4.00	2.29

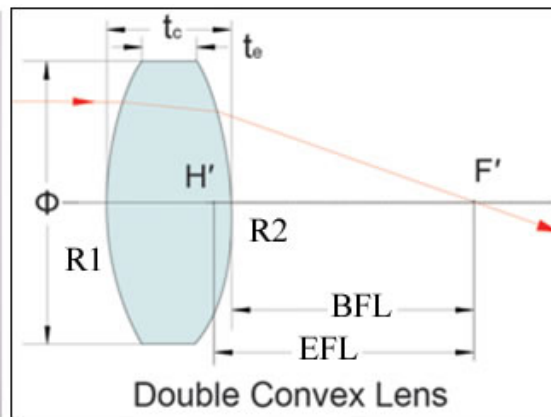
3. BK7 双凸透镜



产品型号	OD	EFL	BFL	R1=R2	TC	TE
STJ-XXXX-L2B-06-012	6	12	11.22	12.00	2.30	1.54
STJ-XXXX-L2B-06-018	6	18	17.19	18.19	2.40	1.90
STJ-XXXX-L2B-06-024	6	24	23.20	24.39	2.40	2.03
STJ-XXXX-L2B-06-030	6	30	29.16	30.58	2.50	2.20
STJ-XXXX-L2B-06-036	6	36	35.30	36.85	2.10	1.86
STJ-XXXX-L2B-10-015	10	15	13.62	14.79	4.00	2.26
STJ-XXXX-L2B-10-020	10	20	18.81	20.06	3.50	2.23
STJ-XXXX-L2B-10-030	10	30	28.82	30.40	3.50	2.67
STJ-XXXX-L2B-10-040	10	40	39.20	40.93	2.40	1.79
STJ-XXXX-L2B-10-050	10	50	49.10	51.22	2.70	2.21
STJ-XXXX-L2B-10-080	10	80	78.97	82.16	3.10	2.80
STJ-XXXX-L2B-15-025	15	25	23.50	25.07	4.40	2.10
STJ-XXXX-L2B-15-030	15	30	28.65	30.31	4.00	2.11
STJ-XXXX-L2B-15-040	15	40	38.78	40.71	3.65	2.26
STJ-XXXX-L2B-15-060	15	60	58.90	61.45	3.30	2.38
STJ-XXXX-L2B-15-080	15	80	78.97	82.16	3.10	2.41
STJ-XXXX-L2B-15-100	15	100	98.92	102.80	3.25	2.70
STJ-XXXX-L2B-20-030	20	30	28.16	30.06	5.40	1.98
STJ-XXXX-L2B-20-040	20	40	38.49	40.56	4.50	2.00
STJ-XXXX-L2B-20-055	20	55	53.93	56.30	3.20	1.41
STJ-XXXX-L2B-20-070	20	70	68.64	71.65	4.10	2.70
STJ-XXXX-L2B-20-080	20	80	78.97	82.16	3.10	1.88
STJ-XXXX-L2B-20-100	20	100	98.92	102.80	3.25	2.27
STJ-XXXX-L2B-30-040	30	40	37.39	40.00	7.65	1.81
STJ-XXXX-L2B-30-055	30	55	52.92	55.77	6.20	2.09
STJ-XXXX-L2B-30-070	30	70	67.94	71.29	6.15	2.96
STJ-XXXX-L2B-30-080	30	80	78.01	81.66	5.95	3.17
STJ-XXXX-L2B-30-100	30	100	98.47	102.57	4.60	2.39
STJ-XXXX-L2B-30-120	30	120	118.37	123.19	4.90	3.07
STJ-XXXX-L2B-40-060	40	60	57.13	60.53	8.50	1.70
STJ-XXXX-L2B-40-080	40	80	77.52	81.41	7.40	2.41

STJ-XXXX-L2B-40-100	40	100	97.55	102.09	7.35	3.39
STJ-XXXX-L2B-40-150	40	150	148.31	154.17	5.10	2.49
STJ-XXXX-L2B-40-200	40	200	198.30	205.84	5.15	3.20
STJ-XXXX-L2B-40-300	40	300	298.33	309.22	5.05	3.76
STJ-XXXX-L2B-50-080	50	80	76.20	80.72	11.25	3.31
STJ-XXXX-L2B-50-120	50	120	117.48	122.73	7.55	2.40
STJ-XXXX-L2B-50-180	50	180	178.36	185.20	4.95	1.56
STJ-XXXX-L2B-50-250	50	250	248.18	257.46	5.50	3.07
STJ-XXXX-L2B-50-300	50	300	298.33	309.22	5.05	3.03

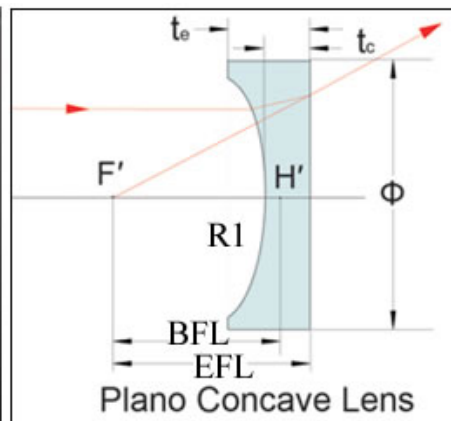
4. 石英双凸透镜



产品型号	OD	EFL	BFL	R1=R2	TC	TE
STJ-XXXX-L2J-06-011	6	12	10.96	10.53	2.90	2.03
STJ-XXXX-L2J-06-018	6	18	17.01	16.05	2.80	2.23
STJ-XXXX-L2J-06-024	6	24	23.14	21.61	2.45	2.03
STJ-XXXX-L2J-06-030	6	30	29.29	27.18	2.05	1.72
STJ-XXXX-L2J-10-015	10	15	13.71	13.16	3.60	1.63
STJ-XXXX-L2J-10-020	10	20	18.61	17.70	3.90	2.46
STJ-XXXX-L2J-10-030	10	30	28.90	27.00	3.15	2.22
STJ-XXXX-L2J-10-040	10	40	39.05	36.23	2.75	2.06
STJ-XXXX-L2J-12-020	12	20	18.48	17.64	4.27	2.17
STJ-XXXX-L2J-12-025	12	25	23.61	22.28	3.95	2.30
STJ-XXXX-L2J-12-030	12	30	28.90	27.00	3.15	1.80
STJ-XXXX-L2J-12-040	12	40	39.03	36.23	2.80	1.80
STJ-XXXX-L2J-15-020	15	20	18.09	17.46	5.30	1.91
STJ-XXXX-L2J-15-025	15	25	23.33	22.16	4.70	2.08
STJ-XXXX-L2J-15-030	15	30	28.56	26.84	4.10	1.96
STJ-XXXX-L2J-15-040	15	40	38.75	36.10	3.60	2.02
STJ-XXXX-L2J-15-050	15	50	48.89	45.33	3.20	1.95
STJ-XXXX-L2J-20-025	20	25	22.22	21.65	7.65	2.75
STJ-XXXX-L2J-20-030	20	30	27.74	26.47	6.35	2.43
STJ-XXXX-L2J-20-035	20	35	33.15	31.24	5.25	1.96

STJ-XXXX-L2J-20-040	20	40	38.12	35.81	5.35	2.50
STJ-XXXX-L2J-20-050	20	50	48.57	45.19	4.10	1.86
STJ-XXXX-L2J-20-075	20	75	73.84	68.23	3.35	1.88
STJ-XXXX-L2J-25-040	25	40	37.63	35.59	6.70	2.16
STJ-XXXX-L2J-25-050	25	50	48.11	44.98	5.40	1.86
STJ-XXXX-L2J-25-060	25	60	58.24	54.20	5.05	2.13
STJ-XXXX-L2J-25-075	25	75	73.49	68.07	4.35	2.03
STJ-XXXX-L2J-25-080	25	80	78.56	72.69	4.15	1.98
STJ-XXXX-L2J-25-100	25	100	98.58	91.03	4.10	2.38
STJ-XXXX-L2J-25-120	25	120	118.66	109.40	3.90	2.47
STJ-XXXX-L2J-25-150	25	150	149.07	137.09	2.70	1.56
STJ-XXXX-L2J-254-040	25.4	40	37.73	35.63	6.42	1.74
STJ-XXXX-L2J-254-050	25.4	50	48.12	44.98	5.37	1.71
STJ-XXXX-L2J-254-060	25.4	60	58.24	54.20	5.05	2.03
STJ-XXXX-L2J-254-075	25.4	75	73.50	68.07	4.35	1.95
STJ-XXXX-L2J-254-080	25.4	80	78.40	72.61	4.63	2.39
STJ-XXXX-L2J-254-100	25.4	100	98.58	91.03	4.10	2.32
STJ-XXXX-L2J-254-120	25.4	120	118.66	109.40	3.90	2.42
STJ-XXXX-L2J-254-150	25.4	150	149.07	137.09	2.70	1.52

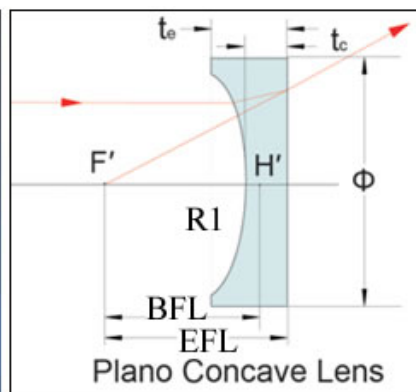
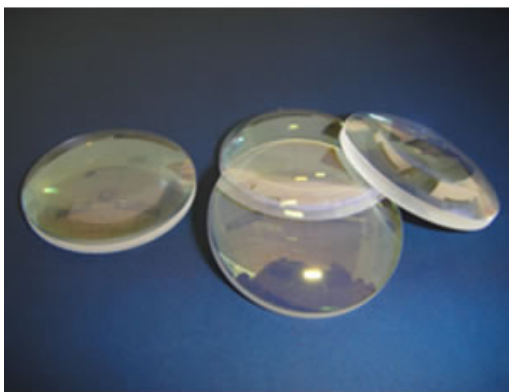
5. BK7 平凹透镜



产品型号	OD	EFL	BFL	R1	TC	TE
STJ-XXXX-L3B-06-012	6	-12	-12.99	-6.20	1.50	2.27
STJ-XXXX-L3B-06-018	6	-18	-19.32	-9.30	2.00	2.50
STJ-XXXX-L3B-06-024	6	-24	-25.19	-12.40	1.80	2.17
STJ-XXXX-L3B-06-030	6	-30	-31.32	-15.50	2.00	2.29
STJ-XXXX-L3B-06-040	6	-40	-41.25	-20.67	1.90	2.12
STJ-XXXX-L3B-10-016	10	-16	-17.05	-8.27	1.60	3.28
STJ-XXXX-L3B-10-020	10	-20	-20.99	-10.34	1.50	2.79
STJ-XXXX-L3B-10-030	10	-30	-31.05	-15.50	1.60	2.43
STJ-XXXX-L3B-10-035	10	-35	-36.19	-18.09	1.80	2.50
STJ-XXXX-L3B-10-040	10	-40	-41.32	-20.67	2.00	2.61
STJ-XXXX-L3B-15-020	15	-20	-20.99	-10.34	1.50	4.72
STJ-XXXX-L3B-15-035	15	-35	-36.19	-18.09	1.80	3.43

STJ-XXXX-L3B-15-040	15	-40	-40.99	-20.67	1.50	2.91
STJ-XXXX-L3B-15-050	15	-50	-51.32	-25.84	2.00	3.11
STJ-XXXX-L3B-15-060	15	-60	-61.32	-31.01	2.00	2.92
STJ-XXXX-L3B-15-15480	15	-15480	-15482.6	-8000.06	4.00	4.00
STJ-XXXX-L3B-20-030	20	-30	-31.05	-15.50	1.60	5.26
STJ-XXXX-L3B-20-040	20	-40	-40.99	-20.67	1.50	4.08
STJ-XXXX-L3B-20-050	20	-50	-51.05	-25.84	1.60	3.61
STJ-XXXX-L3B-20-080	20	-80	-81.32	-41.34	2.00	3.23
STJ-XXXX-L3B-20-100	20	-100	-101.45	-51.68	2.20	3.18
STJ-XXXX-L3B-20-3870	20	-3870	-3872.64	-2000.02	4.00	4.02
STJ-XXXX-L3B-20-7740	20	-7740	-7742.64	-4000.03	4.00	4.01
STJ-XXXX-L3B-20-19350	20	-19350	-19353.3	-10000.1	5.00	5.00
STJ-XXXX-L3B-25-040	25	-40	-40.99	-20.67	1.50	5.71
STJ-XXXX-L3B-25-050	25	-50	-50.99	-25.84	1.50	4.72
STJ-XXXX-L3B-25-060	25	-60	-61.05	-31.01	1.60	4.23
STJ-XXXX-L3B-25-080	25	-80	-81.45	-41.34	2.20	4.13
STJ-XXXX-L3B-25-100	25	-100	-101.71	-51.68	2.60	4.13
STJ-XXXX-L3B-40-060	40	-60	-60.99	-31.01	1.50	8.81
STJ-XXXX-L3B-40-080	40	-80	-81.05	-41.34	1.60	6.76
STJ-XXXX-L3B-40-100	40	-100	-101.19	-51.68	1.80	5.83

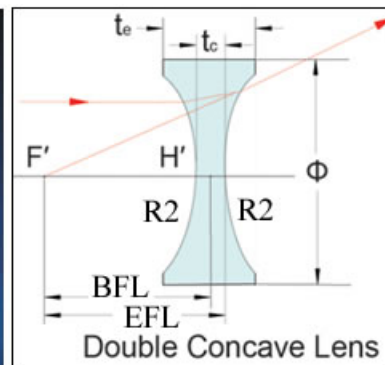
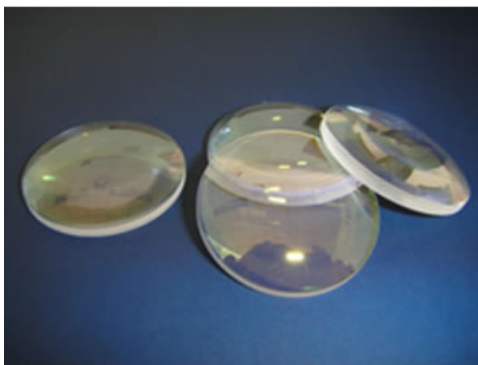
6. 石英平凹透镜



产品型号	OD	EFL	BFL	R1	TC	TE
STJ-XXXX-L3J-06-012	6	-12	-13.10	-5.50	1.60	2.49
STJ-XXXX-L3J-06-018	6	-18	-19.37	-8.25	2.00	2.56
STJ-XXXX-L3J-06-024	6	-24	-25.37	-11.00	2.00	2.42
STJ-XXXX-L3J-06-035	6	-35	-36.51	-16.04	2.20	2.48
STJ-XXXX-L3J-10-018	10	-18	-19.37	-8.25	2.00	3.69
STJ-XXXX-L3J-10-024	10	-24	-25.37	-11.00	2.00	3.20
STJ-XXXX-L3J-10-030	10	-30	-31.37	-13.75	2.00	2.94
STJ-XXXX-L3J-10-040	10	-40	-41.51	-18.34	2.20	2.89
STJ-XXXX-L3J-127-020	12.7	-20	-21.10	-9.17	1.60	4.16
STJ-XXXX-L3J-127-024	12.7	-24	-25.37	-11.00	2.00	4.02

STJ-XXXX-L3J-127-030	12.7	-30	-31.65	-13.75	2.40	3.95
STJ-XXXX-L3J-127-040	12.7	-40	-41.71	-18.34	2.50	3.63
STJ-XXXX-L3J-127-050	12.7	-50	-52.06	-22.92	3.00	3.90
STJ-XXXX-L3J-20-030	20	-30	-31.10	-13.75	1.60	5.91
STJ-XXXX-L3J-20-040	20	-40	-41.10	-18.34	1.60	4.57
STJ-XXXX-L3J-20-050	20	-50	-51.37	-22.92	2.00	4.30
STJ-XXXX-L3J-20-075	20	-75	-76.78	-34.38	2.60	4.09
STJ-XXXX-L3J-20-100	20	-100	-102.06	-45.84	3.00	4.10
STJ-XXXX-L3J-20-4363	20	-4363	-4366.4	-2000.0	5.00	5.03
STJ-XXXX-L3J-254-035	25.4	-35	-36.03	-16.04	1.50	7.74
STJ-XXXX-L3J-254-040	25.4	-40	-41.10	-18.34	1.60	6.71
STJ-XXXX-L3J-254-050	25.4	-50	-51.23	-22.92	1.80	5.64
STJ-XXXX-L3J-254-075	25.4	-75	-76.23	-34.38	1.80	4.23
STJ-XXXX-L3J-254-100	25.4	-100	-101.71	-45.84	2.50	4.29
STJ-XXXX-L3J-508-100	50.8	-100	-101.23	-45.84	1.80	9.48
STJ-XXXX-L3J-508-150	50.8	-150	-151.10	-68.76	1.60	6.46
STJ-XXXX-L3J-508-250	50.8	-250	-251.37	-114.60	2.00	4.85

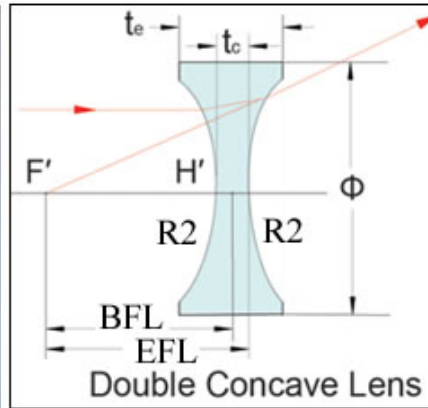
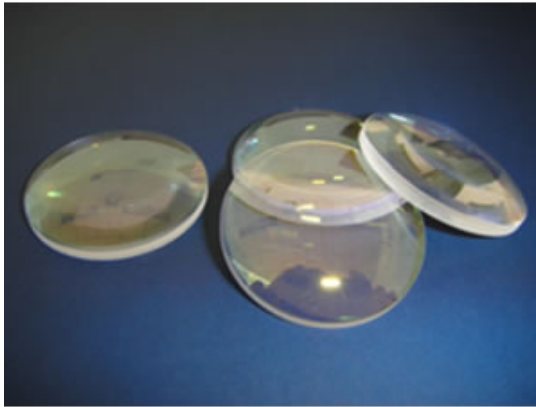
7. BK7 双凹透镜



产品型号	OD	EFL	BFL	R1=R2	TC	TE
STJ-XXXX-L1B-06-012	6	-12	-12.87	-12.85	2.72	3.43
STJ-XXXX-L1B-06-018	6	-18	-18.76	-19.00	2.37	2.85
STJ-XXXX-L1B-06-024	6	-24	-24.72	-25.18	2.22	2.58
STJ-XXXX-L1B-12-018	12	-18	-18.76	-19.00	2.37	4.31
STJ-XXXX-L1B-12-024	12	-24	-24.72	-25.18	2.22	3.67
STJ-XXXX-L1B-12-030	12	-30	-30.56	-31.30	1.72	2.88
STJ-XXXX-L1B-20-030	20	-30	-30.56	-31.30	1.72	5.00
STJ-XXXX-L1B-20-040	20	-40	-40.49	-41.60	1.50	3.94
STJ-XXXX-L1B-20-060	20	-60	-60.69	-62.37	2.10	3.71
STJ-XXXX-L1B-25-040	25	-40	-40.49	-41.60	1.50	5.35
STJ-XXXX-L1B-25-060	25	-60	-60.69	-62.37	2.10	4.63
STJ-XXXX-L1B-25-080	25	-80	-80.70	-83.05	2.14	4.03
STJ-XXXX-L1B-40-050	40	-50	-50.65	-52.02	2.00	10.00
STJ-XXXX-L1B-40-070	40	-70	-70.83	-72.78	2.53	8.13

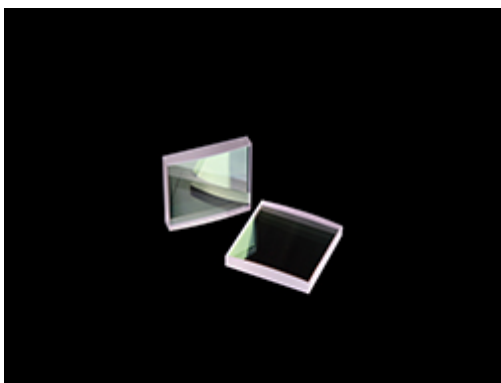
STJ-XXXX-L1B-50-100	50	-100	-100.82	-103.79	2.51	8.62
STJ-XXXX-L1B-50-200	50	-200	-200.83	-207.15	2.52	5.55

8. 石英双凹透镜



产品型号	OD	EFL	BFL	R1=R2	TC	TE
STJ-XXXX-L1J-06-012	6	-12	-12.64	-11.30	1.92	2.73
STJ-XXXX-L1J-06-030	6	-30	-30.64	-27.80	1.90	2.22
STJ-XXXX-L1J-10-020	10	-20	-20.62	-18.62	1.83	3.20
STJ-XXXX-L1J-10-030	10	-30	-30.64	-27.80	1.90	2.81
STJ-XXXX-L1J-127-025	12.7	-25	-25.55	-23.17	1.61	3.38
STJ-XXXX-L1J-127-035	12.7	-35	-35.64	-32.38	1.87	3.13
STJ-XXXX-L1J-20-040	20	-40	-40.68	-36.98	2.00	4.76
STJ-XXXX-L1J-20-050	20	-50	-50.58	-46.11	1.71	3.90
STJ-XXXX-L1J-254-045	25.4	-45	-45.71	-41.58	2.08	6.05
STJ-XXXX-L1J-254-060	25.4	-60	-60.68	-55.32	2.00	4.96

9. BK7 平凸柱面镜



直径 (mm)	有效焦距 (mm)	波长 (nm)
Ø6	45	1064
Ø36	200	980
Ø36	400	980
25.4X25.4	250	980

50X30	60	980
-------	----	-----

可以根据客户要求定制。

10. 镀膜

常用激光透镜的波长为 266nm, 355nm, 405nm, 468nm, 532nm, 650nm, 808nm, 980nm, 1064nm, 1319nm, 1550nm, 10.6um, 都用介质增透膜。

1). 0° AOI AR 单一激光波长镀膜

设计波长: AR@266nm, AR@355nm, AR@405nm, AR@468nm, AR@532nm, AR@650nm, AR@808nm, AR@980nm, AR@1064nm, AR@1319nm, AR@1550nm, AR@2100nm
反射: $R < 0.02\%$

2). 0° AOI AR 双激光波长镀膜

设计波长: AR@532nm 和 1064nm, 1064nm $R < 0.2\%$, 532nm $R < 0.5\%$

3). 0° AOI AR 双激光波长镀膜

设计波长: AR@808nm 和 1064nm, 1064nm $R < 0.2\%$, 808nm $R < 0.5\%$

4). 0° AOI AR 双激光波长镀膜

设计波长: AR@1064nm 和 1319nm, 1064nm $R < 0.2\%$, 1319nm $R < 0.5\%$

5). 0°~45° AOI 高反单一波长镀膜

设计波长: HR@266nm, HR@355nm, HR@405nm, HR@468nm, HR@532nm, HR@650nm, HR@808nm, HR@980nm, HR@1064nm, HR@1319nm, HR@1550nm, 反射率 $R > 99.9\%$

6). 0° AOI 高反双波长镀膜

设计波长: HR@532nm 和 1064nm, HT@808nm, 1064nm $R > 99.8\%$, 532nm $R > 99.5\%$

7). 0° AOI 高反三波长镀膜

设计波长: 355nm 和 532nm 和 1064nm, 355nm 532nm, 1064nm, $R > 99.5\%$

8). 0° AOI PR 单一波长镀膜分束

设计波长: PR@1064nm; 半透 $T = 5\% \sim 95\% \pm 2\%$

9). 0° AOI 长波/短波通光片

设计波长: HR@1064nm, $R > 99.8\%$; HT@808nm $T > 99\%$ (AR@808nm, 双面)
设计波长: HR@808nm, $R > 99.8\%$; HT@1064nm $T > 99\%$ (AR@1064nm, 双面)

10). 0° AOI 短波通光片

设计波长: HR@1064nm, $R > 99.8\%$; HT@532nm $T > 98\%$ (AR@532nm, 双面)

11). 0° AOI 长波通光片

设计波长: HR@266nm, $R > 99.9\%$; HT@532nm $T > 99\%$ (AR@532nm, 双面)

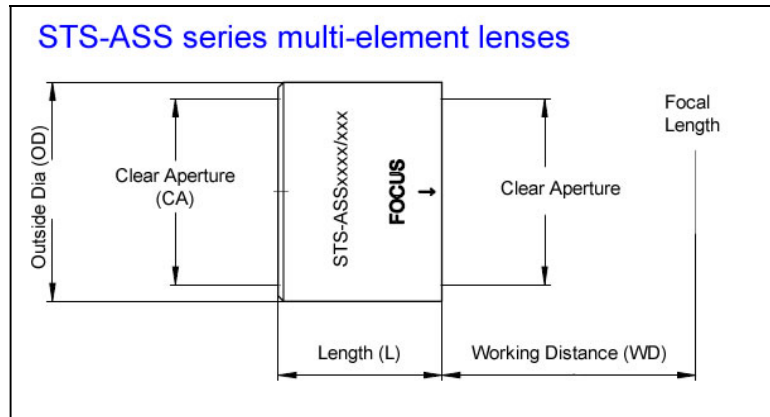
12). 0° AOI 长波通光片

设计波长: HR@355nm, R>99.8%; HT@532nm 和 @1064nm T>98%; (AR@1064nm, AR@532nm, 双面)

13). 0° AOI 短波通光片 Laser Line SHORTPASS

设计波长: HR@946nm, R>99.8%; HT@810nm, T>99% (AR@810nm, 双面)

11. 多片镜透镜 (聚焦镜)



产品型号	λ [nm]	FL [mm]	材料	OD [mm]	CA [mm]	长度 [mm]	WD [mm]	镜片 数量
STS-ASS5185/199	266	81.9	石英	40	35	15	73.4	2
STS-ASS2550/199	266	44.3	石英	30	23	20	40.4	2
STS-ASS2020/199	266	23.8	石英	25	12.5	17	17.1	3
STS-ASS2060/199	266	57.3	石英	40	34	30	43.9	3
STS-ASS5120/199	266	109	石英	48	40	20	99.1	2
STS-ASS2060/075	355	60	石英	40	34	30	46.5	3
STS-ASS2550/075	355	48.2	石英	30	23	20	43.5	2
STS-ASS5185/075	355	86.4	石英	40	31	15	77.6	2
STS-ASS2020/075	355	25.4	石英	25	12.5	17	17.9	3
STS-ASS5120/075	355	114.4	石英	48	40	20	104.4	2
STS-ASS2060/292	515-545	62.4	石英	40	34	32	47.9	3
STS-ASS2550/292	515-545	49.3	石英	30	23	20	45.7	2
STS-ASS2560/292	515-545	58.4	石英	30	23	24.5	51.8	2
STS-ASS5300/292	515-545	99.7	石英	41	20	16	86.7	3
STS-ASS2020/292	515-545	24.5	石英	25	12.5	13.5	19.3	3
STS-ASS6200/292	515-545	196.1	石英	54	48	15	188.5	2
STS-ASS5370/292	515-545	174.5	石英	41	35	24	174.1	2
STS-ASS6151/292	515-545	146.3	石英	56	50	20	135	2
STS-ASS1030/121	532	29.8	玻璃	20	14	11	25	2
STS-ASS0177/121	532	76.6	玻璃	41	35	24	64	3

STS-ASS0115/121	532	89.4	玻璃	41	35	32	88.7	3
STS-ASS6001/121	532	76.1	玻璃	54	48	36	63.9	3
STS-ASS5340/121	532	88.9	玻璃	41	30	21.8	64.4	2
STS-ASS5320/121	532	114.5	玻璃	41	31	15.5	105.8	2
STS-ASS5151/328	1030-1090	148.9	石英	54	48	43	152.3	2
STS-ASS6200/328	1030-1090	200.9	石英	54	48	15	193.2	2
STS-ASS6101/328	1030-1090	100.6	石英	56	50	22.5	86.3	2
STS-ASS1093/328	1030-1090	100.6	石英	48	42	22	86.1	2
STS-ASS5201/328	1030-1090	200.1	石英	75	68	23	186.2	2
STS-ASS5170/328	1030-1090	171.1	石英	50	45	43	175.2	2
STS-ASS5152/328	1030-1090	153.4	石英	75	68	34	129.2	2
STS-ASS2020/328	1030-1090	25.1	石英	25	12.5	13.5	19.8	3
STS-ASS6120/328	1030-1090	120.1	石英	54	48.5	59	112.6	2
STS-ASS5150/328	1030-1090	148.9	石英	50	45	43	152.6	2
STS-ASS5120/328	1030-1090	128.7	石英	48	40	20	110.8	2
STS-ASS2060/328	1030-1090	63.9	石英	40	34	32	49.3	3
STS-ASS2250/328	1030-1090	249.8	石英	54	50	20	247.5	2
STS-ASS5080/328	1030-1090	79.6	石英	54	48	36	60.2	3
STS-ASS2560/328	1030-1090	59.9	石英	30	23	22.5	57.5	2
STS-ASS2550/328	1030-1090	49.7	石英	30	23	20	48.4	2

12. 非球面镜

非球面镜的一个最大的优势就是在需要透镜系统的情况下，它这一个光学元件就能完成成像任务。非球面镜的主要优点是：

- 球面像差小
- 重量轻
- 传输快
- 无内影

高纯石英材料和低吸收镀膜的结合降低了焦距和工作距离的热效应导致的位移。

非球面镜的另一个应用是可根据强度分布或相位进行光束整形。它可将高斯轮廓转换为平顶轮廓。对于材料加工，它的优点是可使材料表面的去除更均匀，去除区和周围材料之间的边界更陡，由此而产生的热效应影响的区域更小。

我们可生产直径高达 200 毫米的非球面镜。基于我们的测量装置（干涉波前测试、触觉和光学三维轮廓术）我们根据几何结构可确保 $0.15\ \mu\text{m PV (fWD)}$ 和 $\text{RMSi} < 0.025\ \mu\text{m}$ 的表面质量。还可测量高达 21mm 的矢状高度，能够在一定直径下生产和测试非常陡峭的半径。

我们的产品范围包括可用于聚焦和准直的焦距从 20-400mm 的未装配和已装配的精密非球面镜。也可根据客户的特殊要求和形状提供定制。我们的产品技术参数和性能如下：

尺寸：

- 直径: 12-200mm
- 直径误差: $\pm 0.01\text{mm}$
- 厚度误差: $\pm 0.025\text{mm}$

表面形状和误差 (ISO 10110; @546nm)

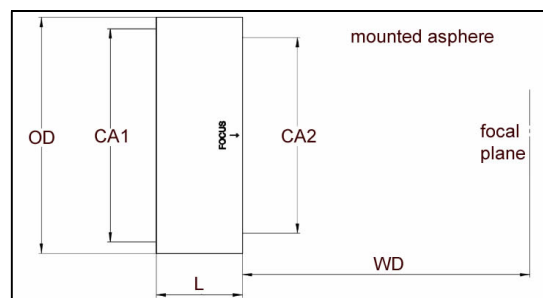
- 曲率凹半径(局部): $>35\text{mm}$
- 矢状偏差(PV): $<0.5\text{fr}$ ($\sim 0.137\mu\text{m}$)
- 不规则性(PV): $<0.5\text{fr}$ ($\sim 0.137\mu\text{m}$)
- 旋转不变性(PV): $<0.2\text{gr}$ ($\sim 0.055\mu\text{m}$)
- RMSi: $<0.1\text{fr}$ ($\sim 0.025\mu\text{m}$)
- 中心化(表面间的倾斜角度): $<1\text{arcmin}$
- 清洁度/缺陷: 3×0.04 (S/D: 10/5)

材料

- 所有型号都是熔融石英 (Corning, Heraeus, Nikon, Ohara)
- 光学玻璃 (CDGM, Hoya, Ohara, Schott, ...)

测量方法

- 触觉二维测量
- 通过白光干涉法进行 2D/3D 轮廓测量
- 干涉波前测量 (632.8nm)



型号	波长 [nm]	焦距 FL [mm]	材料	OD- \emptyset [mm]	CA1 [mm]	L [mm]	WD [mm]	装配
STS-ADX0220/328	1030-1090	20.0	fs	25.0	22.5	13.2	13.3	未装配
STS-ADX0230/328	1030-1090	30.0	fs	30.0	27.0	16.0	20.9	未装配
STS-ADX0240/328	1030-1090	40.0	fs	30.0	27.0	15.0	31.3	未装配
STS-ADX0250/328	1030-1090	50.0	fs	30.0	27.0	13.7	42.1	未装配
STS-ADX0260/328	1030-1090	60.0	fs	30.0	27.0	11.3	53.5	未装配
STS-ADX0310/328	1030-1090	100.0	fs	38.1	34.3	11.0	93.7	未装配
STS-ADX0311/328	1030-1090	100.0	fs	30.0	27.0	11.0	93.7	未装配
STS-ADX0312/328	1030-1090	120.0	fs	38.1	34.3	10.3	114.0	未装配
STS-ADX0313/328	1030-1090	120.0	fs	30.0	27.0	10.3	114.0	未装配
STS-ADX0315/328	1030-1090	150.0	fs	38.1	34.3	9.6	144.4	未装配
STS-ADX0316/328	1030-1090	150.0	fs	30.0	27.0	9.6	144.4	未装配
STS-ADX0320/328	1030-1090	200.0	fs	38.1	34.3	8.9	194.8	未装配
STS-ADX0325/328	1030-1090	250.1	fs	38.1	34.3	8.9	245.2	未装配

STS-ADX0330/328	1030-1090	300.0	f _s	30.0	34.3	9.0	294.7	未装配
STS-ADX0370/328	1030-1090	71.8	f _s	38.1	34.3	11.0	63.6	未装配
STS-ADX0380/328	1030-1090	80.0	f _s	38.1	34.3	12.0	73.1	未装配
STS-ADX0381/328	1030-1090	80.0	f _s	30.0	27.0	12.0	73.1	未装配
STS-ADX0510/328	1030-1090	100.0	f _s	52.0	46.8	17.5	89.8	未装配
STS-ADX0512/328	1030-1090	120.0	f _s	52.0	46.8	18.0	109.6	未装配
STS-ADX0515/328	1030-1090	150.0	f _s	52.0	46.8	11.0	143.5	未装配
STS-ADX0520/328	1030-1090	200.1	f _s	52.0	46.8	8.7	195.0	未装配
STS-ADX0530/328	1030-1090	300.0	f _s	52.0	47.0	9.0	294.6	未装配
STS-ADX0540/328	1030-1090	400.0	f _s	52.0	48.0	8.5	395.2	未装配
STS-ADX0580/328	1030-1090	80.9	f _s	52.0	46.8	17.8	70.4	未装配
STS-ADX4350/373	420-480	50.0	f _s	38.1	34.3	14.0	41.8	未装配
STS-ADX4360/373	420-480	60.0	f _s	38.1	34.3	12.0	52.9	未装配
STS-ADX4370/373	420-480	70.0	f _s	38.1	34.3	11.0	63.5	未装配
STS-ADX4380/373	420-480	80.0	f _s	38.1	34.3	10.0	74.1	未装配
S6ASS7410/328	1030-1090	100.0	f _s	41.0	37.0	15.0	91.7	未装配
S6ASS7412/328	1030-1090	120.0	f _s	41.0	37.0	15.0	111.9	未装配
S6ASS7415/328	1030-1090	150.0	f _s	41.0	37.0	15.0	142.2	未装配
S6ASS7420/328	1030-1090	200.0	f _s	41.0	37.0	15.0	192.5	未装配
S6ASS7425/328	1030-1090	250.1	f _s	41.0	37.0	15.0	242.0	已装配
S6ASS7480/328	1030-1090	80.0	f _s	41.0	37.0	15.0	71.3	已装配
S6ASS7510/328	1030-1090	100.0	f _s	56.0	50.0	20.0	89.0	已装配
S6ASS7512/328	1030-1090	120.0	f _s	56.0	50.0	20.0	108.6	已装配
S6ASS7515/328	1030-1090	150.0	f _s	56.0	50.0	20.0	142.2	已装配
S6ASS7520/328	1030-1090	200.1	f _s	56.0	50.0	20.0	193.5	已装配
S6ASS7540/328	1030-1090	400.0	f _s	56.0	50.0	18.3	393.5	已装配
S6ASS7580/328	1030-1090	80.9	f _s	56.0	50.0	20.0	70.0	已装配
S6ASS8411/328	1030-1090	100.0	f _s	36.0	28.0	20.5	90.0	已装配
S6ASS8413/328	1030-1090	120.0	f _s	36.0	28.0	20.5	110.3	已装配
S6ASS8416/328	1030-1090	150.0	f _s	36.0	28.0	20.5	140.6	已装配
S6ASS8420/328	1030-1090	20.0	f _s	36.0	23.0	20.5	10.7	已装配
S6ASS8430/328	1030-1090	30.0	f _s	36.0	28.0	20.5	18.8	已装配
S6ASS8440/328	1030-1090	40.0	f _s	36.0	28.0	20.5	28.5	已装配
S6ASS8450/328	1030-1090	50.0	f _s	36.0	28.0	20.5	38.9	已装配
S6ASS8460/328	1030-1090	60.0	f _s	36.0	28.0	20.5	50.1	已装配
S6ASS8481/328	1030-1090	80.0	f _s	36.0	28.0	20.5	69.6	已装配

离子透镜

离子透镜因其可以储存量子位元（量子位元）以及量子计算机的相关用途，使其成为近年人们越来越感兴趣的研究课题。当然，人们不仅要使用它，而且要通过各种基本实验来详细了解它们的行为。

我们设计了两种透镜，一种只用于观察，一种结合激光聚焦镜来做这些实验。我们可以提供高数值孔径和能应用到特定波长（紫外到红外）的离子透镜。但由于真空冷冻器的尺寸（如窗口厚度）不同，所以每个透镜都必须根据现有条件进行特殊设计。

我们可以根据用户窗口厚度进行调整也可以根据客户的要求来定制研发离子透镜。

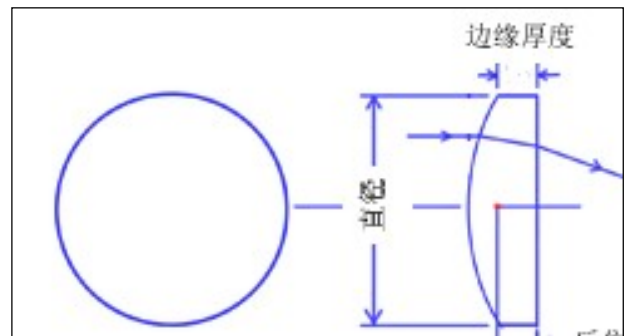
二氧化碳激光聚焦镜

1. 平凸形聚焦镜

焦距长度误差 (EFL)	±2%
厚度误差	±0.010''
直径误差	+0.000'' - 0.005''
边缘厚度误差 (ETV)	±0.002''
干涉条纹数 @ 0.63 um	1 - 0.5
光洁度	40-20
镀膜透过率@10.6 um	99.75%

型号命名规则: FL-10.6-F-D-T-EN-yy

- FL: 单片聚焦镜
- 10.6: 激光波长 10.6um
- F: 焦距, 单位 mm
- D: 镜片直径, 单位 mm
- T: 厚度, 单位 mm
- EN: 单位英寸(如无 EN, 则是 mm 单位)
- yy: 其它用途



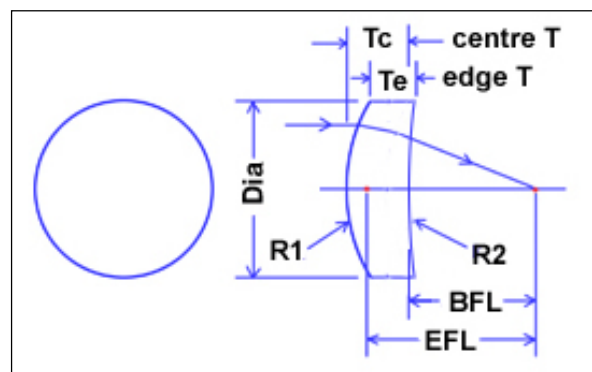
型号	材料	焦距 mm	后焦距 mm	直径 mm	边缘厚度 mm
FL-10.6-F25-D12.7-T2.5-U0	ZnSe	25		12.7	2.5
FL-10.6-F25.4-D12.7-JS	ZnSe	25.4		12.7	
FL-10.6-F40-D16-T2-CC	ZnSe	40	39.1	16	2.0
FL-10.6-F40-D18-JS	ZnSe	40	39.1	18	
FL-10.6-F50-D16-T2-CC	ZnSe	50	49.1	16	2.0
FL-10.6-F50-D18-JS	ZnSe	50	49.1	18	
FL-10.6-F50-D25-JS	ZnSe	50	49.1	25	
FL-10.6-F55-D20-JS	ZnSe	55		20	
FL-10.6-F60-D18-T2-CC	ZnSe	60	59.1	18	2.0
FL-10.6-F60-D18-JS	ZnSe	60	59.1	18	
FL-10.6-F74-D30-T2.5-JS	ZnSe	75		30	2.5
FL-10.6-F80-D25-T2.5-CC	ZnSe	80	78.8	25	2.5
FL-10.6-F80-D25-JS	ZnSe	80	78.8	25	
FL-10.6-F95.25-D25.4-JS	ZnSe	95.25		25.4	
FL-10.6-F95-D38-T3-U0	ZnSe	95		38.05	3
FL-10.6-F100-D25-T2.5-CC	ZnSe	100	98.9	25	2.5
FL-10.6-F100-D25-JS	ZnSe	100	98.9	25	
FL-10.6-F100-D38-T3-U0	ZnSe	100		38.05	3
FL-10.6-F127-D27.95-JS	ZnSe	127		27.95	
FL-10.6-F127-D25.4-JS	ZnSe	127		25.4	

FL-10.6-F127-D28-T3.17-U0	ZnSe	127		28	3.17
FL-10.6-F127-D28-T4-U0	ZnSe	127		28	4
FL-10.6-F127-D28-T3-U0	ZnSe	127		28	3
FL-10.6-F127-D38-T6-U0	ZnSe	127		38.05	6
FL-10.6-F127-D38-T7.6-U0	ZnSe	127		38.05	7.6
FL-10.6-F127-D38-T3-U0	ZnSe	127		38.05	3
FL-10.6-F127-D50.8-T9.6-U0	ZnSe	127		50.8	9.58
FL-10.6-F127-D50.8-T7.9-U0	ZnSe	127		50.8	7.87
FL-10.6-F130-D38-T7.1-U0	ZnSe	130		38.05	7.1
FL-10.6-F132-D50.8-T9.7-U0	ZnSe	132		50.8	9.68
FL-10.6-F175-D38-T3-U0	ZnSe	175		38.05	3
FL-10.6-F178-D17-T1.79-U0	ZnSe	178		17	1.79
FL-10.6-F190-D38-T6-U0	ZnSe	190		38.05	6
FL-10.6-F190-D50.8-T9.6-U0	ZnSe	190		50.8	9.58
FL-10.6-F190-D38-T2-U0	ZnSe	190		38.05	2
FL-10.6-F191-D50.8-T7.9-U0	ZnSe	190.5		50.8	7.87
FL-10.6-F191-D38-T7.6-U0	ZnSe	190.5		38.05	7.6
FL-10.6-F194-D38-T7.1-U0	ZnSe	194		38.05	7.1
FL-10.6-F195-D50.8-T9.7-U0	ZnSe	195		50.8	9.68
FL-10.6-F222-D50.8-T7.9-U0	ZnSe	222		50.8	7.87
FL-10.6-F254-D50.8-T7.9-U0	ZnSe	254		50.8	7.87
FL-10.6-F254-D28-T3-U0	ZnSe	254		28	3
FL-10.6-F280-D15-T2.5-U0	ZnSe	280		15	2.5
FL-10.6-F381-D38-T6-U0	ZnSe	381		38.05	6
FL-10.6-F1700-D50.8-T3.5-U0	ZnSe	1700		50.8	3.5
FL-10.6-F15000-D50.8-T4.1-U0	ZnSe	15000		50.8	4.06

注：可以根据客户的需要订制聚焦镜。

2. 月牙形聚焦镜

镜片直径误差	+0/-0.1mm
差	
焦距误差	+/-0.5%
入射角	0 degree
透过率	>99.4%
反射率	<0.1% per surface
吸收率	<0.2% per surface



型号	材料	直径 mm	边缘厚度 mm	镀膜	有效焦距 mm
FL-10.6-F25.4-D12.7-T2-MN-U0	ZnSe	12.7	2	AR/AR	25.4
FL-10.6-F38.1-D12.7-T2-MN-U0	ZnSe	12.7	2	AR/AR	38.1
FL-10.6-F100-D13-T2-MN-U0	ZnSe	13	2	AR/AR	100
FL-10.6-F48-D15.5-T2.5-MN-U0	ZnSe	15.5	2.5	AR/AR	48
FL-10.6-F110-D15.5-T2.5-MN-U0	ZnSe	15.5	2.5	AR/AR	110

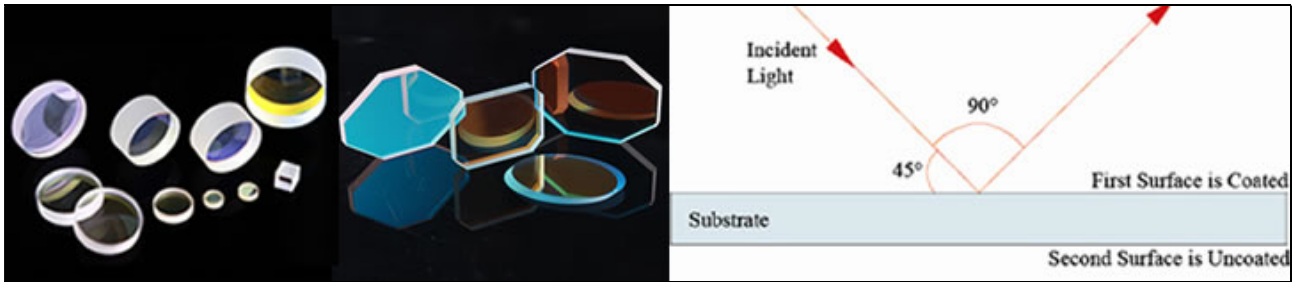
FL-10.6-F25.4-D25.4-T2.5-MN-UO	ZnSe	25.4	2.5	AR/AR	25.4
FL-10.6-F38.1-D25.4-T2.5-MN-UO	ZnSe	25.4	2.5	AR/AR	38.1
FL-10.6-F50.8-D25.4-T2.5-MN-UO	ZnSe	25.4	2.5	AR/AR	50.8
FL-10.6-F63.5-D25.4-T2.5-MN-UO	ZnSe	25.4	2.5	AR/AR	63.5
FL-10.6-F76.2-D25.4-T2.5-MN-UO	ZnSe	25.4	2.5	AR/AR	76.2
FL-10.6-F95.3-D25.4-T2.5-MN-UO	ZnSe	25.4	2.5	AR/AR	95.3
FL-10.6-F101.6-D25.4-T2.5-MN-UO	ZnSe	25.4	2.5	AR/AR	101.6
FL-10.6-F110-D25.4-T2.5-MN-UO	ZnSe	25.4	2.5	AR/AR	110
FL-10.6-F127-D25.4-T2.5-MN-UO	ZnSe	25.4	2.5	AR/AR	127
FL-10.6-F152-D25.4-T2.5-MN-UO	ZnSe	25.4	2.5	AR/AR	152
FL-10.6-F200-D25.4-T2.5-MN-UO	ZnSe	25.4	2.5	AR/AR	200
FL-10.6-F221-D25.4-T2.24-MN-UO	ZnSe	25.4	2.24	AR/AR	221
FL-10.6-F508-D25.4-T2.5-MN-UO	ZnSe	25.4	2.5	AR/AR	508
FL-10.6-F25.4-D28-T3-MN-UO	ZnSe	28	3	AR/AR	25.4
FL-10.6-F38-D28-T2.5-MN-UO	GaAs	28	2.5	Uncoated	38
FL-10.6-F38.1-D28-T3-MN-UO	ZnSe	28	3	AR/AR	38.1
FL-10.6-F50.8-D28-T3-MN-UO	ZnSe	28	3	AR/AR	50.8
FL-10.6-F50.8-D28-T4.2-MN-UO	ZnSe	28	4.2	AR/AR	50.8
FL-10.6-F63.5-D28-T4.2-MN-UO	ZnSe	28	4.2	AR/AR	63.5
FL-10.6-F63.5-D28-T3-MN-UO	ZnSe	28	3	AR/AR	63.5
FL-10.6-F63.5-D28-T1.8-MN-UO	GaAs	28	1.8	AR/AR	63.5
FL-10.6-F76.2-D28-T3-MN-UO	ZnSe	28	3	AR/AR	76.2
FL-10.6-F89-D28-T3-MN-UO	ZnSe	28	3	AR/AR	89
FL-10.6-F90-D28-T3-MN-UO	ZnSe	28	3	AR/AR	90
FL-10.6-F95.3-D28-T3-MN-UO	ZnSe	28	3	AR/AR	95.3
FL-10.6-F95.3-D28-T4.2-MN-UO	ZnSe	28	4.2	AR/AR	95.3
FL-10.6-F100-D26-T3-MN-UO	ZnSe	28	3	AR/AR	100
FL-10.6-F102-D28-T3-MN-UO	ZnSe	28	3	AR/AR	102
FL-10.6-F110-D28-T3-MN-UO	ZnSe	28	3	AR/AR	110
FL-10.6-F127-D28-T3-MN-UO	ZnSe	28	3	AR/AR	127
FL-10.6-F127-D28-T6.2-MN-UO	ZnSe	28	6.2	AR/AR	127
FL-10.6-F127-D28-T4.2-MN-UO	ZnSe	28	4.2	AR/AR	127
FL-10.6-F127-D28-T3-MN-UO	ZnSe	28	3	AR/AR	152
FL-10.6-F152-D28-T3-MN-UO	ZnSe	28	3	AR/AR	190.5
FL-10.6-F190.5-D28-T4.2-MN-UO	ZnSe	28	4.2	AR/AR	190.5
FL-10.6-F254-D28-T3-MN-UO	ZnSe	28	3	AR/AR	254
FL-10.6-F762-D28-T3-MN-UO	ZnSe	28	3	AR/AR	762
FL-10.6-F750-D30-T3-MN-UO	ZnSe	30	3	AR/AR	750
FL-10.6-F89-D32-T4.2-MN-UO	ZnSe	32	4.2	AR/AR	89
FL-10.6-F95.3-D38-T7.4-MN-UO	ZnSe	38.05	7.4	AR/AR	95.3
FL-10.6-F127-D38-T7.4-MN-UO	ZnSe	38.05	7.4	AR/AR	127
FL-10.6-F190.5-D38-T7.4-MN-UO	ZnSe	38.05	7.4	AR/AR	190.5
FL-10.6-F228.6-D38-T7.4-MN-UO	ZnSe	38.05	7.4	AR/AR	228.6
FL-10.6-F254-D38-T7.4-MN-UO	ZnSe	38.05	7.4	AR/AR	254
FL-10.6-F38.1-D38-T2.4-MN-UO	ZnSe	38.05	2.4	AR/AR	38.1

FL-10.6-F50.8-D38-T3-MN-UO	ZnSe	38.05	3	AR/AR	50.8
FL-10.6-F63.5-D38-T6.1-MN-UO	ZnSe	38.05	6.1	AR/AR	63.5
FL-10.6-F63.5-D38-T3-MN-UO	ZnSe	38.05	3	AR/AR	63.5
FL-10.6-F75-D38-T2.93-MN-UO	ZnSe	38.05	2.93	AR/AR	75
FL-10.6-F76.2-D38-T3-MN-UO	ZnSe	38.05	3	AR/AR	76.2
FL-10.6-F80-D38-T3-MN-UO	ZnSe	38.05	3	AR/AR	80
FL-10.6-F89-D38-T3-MN-UO	ZnSe	38.05	3	AR/AR	89
FL-10.6-F95-D38-T3-MN-UO	ZnSe	38.05	6	AR/AR	95
FL-10.6-F95.3-D38-T3-MN-UO	ZnSe	38.05	3	AR/AR	95.3
FL-10.6-F100-D38-T3-MN-UO	ZnSe	38.05	3	AR/AR	100
FL-10.6-F127-D38-T3-MN-UO	ZnSe	38.05	3	AR/AR	127
FL-10.6-F127-D38-T7.8-MN-UO	ZnSe	38.05	7.8	AR/AR	127
FL-10.6-F127-D38-T6.2-MN-UO	ZnSe	38.05	6.2	AR/AR	127
FL-10.6-F127.1-D38-T9-MN-UO	ZnSe	38.05	9	AR/AR	127.1
FL-10.6-F150-D38-T6.2-MN-UO	ZnSe	38.05	6.2	AR/AR	150
FL-10.6-F152-D38-T3-MN-UO	ZnSe	38.05	3	AR/AR	152
FL-10.6-F190-D38-T7.9-MN-UO	ZnSe	38.05	7.87	AR/AR	190
FL-10.6-F190.5-D38-T6.1-MN-UO	ZnSe	38.05	6.1	AR/AR	190.5
FL-10.6-F190.5-D38-T3-MN-UO	ZnSe	38.05	3	AR/AR	190.5
FL-10.6-F190.7-D38-T9-MN-UO	ZnSe	38.05	9	AR/AR	190.7
FL-10.6-F196-D38-T9-MN-UO	ZnSe	38.05	9	AR/AR	196
FL-10.6-F254-D38-T6.3-MN-UO	ZnSe	38.05	6.3	AR/AR	254
FL-10.6-F254-D38-T3-MN-UO	ZnSe	38.05	3	AR/AR	254
FL-10.6-F345-D38-T3-MN-UO	ZnSe	38.05	3	AR/AR	345
FL-10.6-F508-D38-T3-MN-UO	ZnSe	38.05	3	AR/AR	508
FL-10.6-F750-D38-T3.1-MN-UO	ZnSe	38.05	3.06	AR/AR	750
FL-10.6-F127-D44.45-T9-MN-UO	ZnSe	44.45	9	AR/AR	127
FL-10.6-F190-D44.45-T9-MN-UO	ZnSe	44.45	9	AR/AR	190
FL-10.6-F127-D44.5-T3.5-MN-UO	ZnSe	44.5	3.5	AR/AR	127
FL-10.6-F125-D50-T1.5-MN-UO	Ge	50	1.5	AR/AR-Ge	125
FL-10.6-F127-D50-T3.5-MN-UO	ZnSe	50	3.5	AR/AR	127
FL-10.6-F150-D50-T3.5-MN-UO	ZnSe	50	9.6	AR/AR	150
FL-10.6-F95-D50.8-T9.6-MN-UO	ZnSe	50.8	9.6	AR/AR	95
FL-10.6-F127-D50.8-T7.9-MN-UO	ZnSe	50.8	7.87	AR/AR	127
FL-10.6-F127-D50.8-T3.5-MN-UO	ZnSe	50.8	3.5	AR/AR	127
FL-10.6-F127-D50.8-T9.6-MN-UO	ZnSe	50.8	9.6	AR/AR	127
FL-10.6-F190.5-D50.8-T9.6-MN-UO	ZnSe	50.8	9.6	AR/AR	190.5
FL-10.6-F190.5-D50.8-T3.5-MN-UO	ZnSe	50.8	3.5	AR/AR	190.5
FL-10.6-F198-D50.8-T9.6-MN-UO	ZnSe	50.8	9.62	AR/AR	198
FL-10.6-F254-D50.8-T9.6-MN-UO	ZnSe	50.8	9.6	AR/AR	254
FL-10.6-F254-D50.8-T4-MN-UO	Ge	50.8	4	AR/AR-DUR	254

激光光学反射镜

1. BK7 反射镜

常用波长包括 355nm, 532nm, 650nm, 808nm, 980nm, 1064nm, 1319nm 和 1550nm, 入射角 0 到 45 度, 反射率高达 99.9% 以上, 具有很高的损伤阈值。



	标准产品	超高精度产品
面型	平平	平平
材料	BK7	BK7
直径公差	+0/-0.1mm	+0/-0.1mm
厚度公差	±0.2mm	±0.1mm
平整度	$\lambda/2$ @632.8nm	$\lambda/10$ @632.8nm
有效孔径	90%	90%
光洁度	40-20	20-10
平行度	<1arc min	<10arc min
侧边	<0.25mm x 45°	<0.25mm x 45°
设计波长	587.6nm	587.6nm

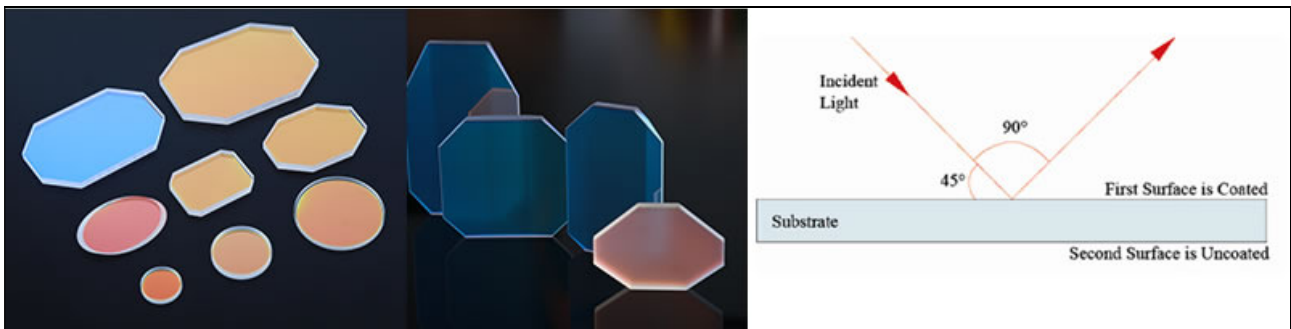
标准产品			超高精度产品		
产品型号	D (mm)	T (mm)	产品型号	D (mm)	T (mm)
STJ-XXXX-MB-6.0-3-A	6	3	STJ-XXXX-MHB-6.0-3-A	6.0	3.0
STJ-XXXX-MB-10.0-3-A	10	3	STJ-XXXX-MHB-10.0-3-A	10.0	3.0
STJ-XXXX-MB-12.7-3-A	12.7	3	STJ-XXXX-MHB-12.7-3-A	12.7	3.0
STJ-XXXX-MB-15.0-3-A	15	3	STJ-XXXX-MHB-15.0-3-A	15.0	3.0
STJ-XXXX-MB-15.0-4-A	15	4	STJ-XXXX-MHB-15.0-4-A	15.0	4.0
STJ-XXXX-MB-20.0-4-A	20	4	STJ-XXXX-MHB-20.0-4-A	20.0	4.0
STJ-XXXX-MB-20.0-5-A	20	5	STJ-XXXX-MHB-20.0-5-A	20.0	5.0
STJ-XXXX-MB-25.0-4-A	25	4	STJ-XXXX-MHB-25.0-4-A	25.0	4.0
STJ-XXXX-MB-25.4-4-A	25.4	4	STJ-XXXX-MHB-25.4-4-A	25.4	4.0
STJ-XXXX-MB-30.0-4-A	30	4	STJ-XXXX-MHB-30.0-4-A	30.0	4.0
STJ-XXXX-MB-30.30-4-A	30x30	4	STJ-XXXX-MHB-30.30-4-A	30x30	4.0
STJ-XXXX-MB-40.0-3-A	40	3	STJ-XXXX-MHB-40.0-3-A	40.0	3.0
STJ-XXXX-MB-40.0-4-A	40	4	STJ-XXXX-MHB-40.0-4-A	40.0	4.0
STJ-XXXX-MB-42.0-3-A	42	3	STJ-XXXX-MHB-42.0-3-A	42.0	3.0
STJ-XXXX-MB-48.0-3-A	48	3	STJ-XXXX-MHB-48.0-3-A	48.0	3.0

STJ-XXXX-MB-50.0-4-A	50	4	STJ-XXXX-MHB-50.0-4-A	50.0	4.0
STJ-XXXX-MB-50.8-4-A	50.8	4	STJ-XXXX-MHB-50.8-4-A	50.8	4.0

订货须知：

订货时请先选好产品型号，并写明（1）激光波长（XXXX nm）和 AOI（入射角，A，一般是 0 或 45 度），如 STJ-1064-MB-50.8-4-45 是 45 度入射角 1064nm 波长的标准 K7 全反镜。

2. 石英全反镜



	标准产品	超高精度产品
面型	平平	平平
材料	熔融石英	熔融石英
直径公差	+0/-0.1mm	+0/-0.1mm
厚度公差	±0.2mm	±0.1mm
平整度	$\lambda/2$ @632.8nm	$\lambda/10$ @632.8nm
有效孔径	90%	90%
光洁度	40-20	20-10
平行度	<1arc min	<10arc min
侧边	<0.25mm x 45°	<0.25mm x 45°
设计波长	587.6nm	587.6nm

标准产品			超高精度产品		
产品型号	D (mm)	T (mm)	产品型号	D (mm)	T (mm)
STJ-XXXX-MJ-6.0-3-A	6	3	STJ-XXXX-MHJ-6.0-3-A	6	3
STJ-XXXX-MJ-10.0-3-A	10	3	STJ-XXXX-MHJ-10.0-3-A	10	3
STJ-XXXX-MJ-12.7-3-A	12.7	3	STJ-XXXX-MHJ-12.7-3-A	12.7	3
STJ-XXXX-MJ-15.0-3-A	15	3	STJ-XXXX-MHJ-15.0-3-A	15	3
STJ-XXXX-MJ-15.0-4-A	15	4	STJ-XXXX-MHJ-15.0-4-A	15	4
STJ-XXXX-MJ-20.0-4-A	20	4	STJ-XXXX-MHJ-20.0-4-A	20	4
STJ-XXXX-MJ-20.0-5-A	20	5	STJ-XXXX-MHJ-20.0-5-A	20	5
STJ-XXXX-MJ-25.0-4-A	25	5	STJ-XXXX-MHJ-25.0-4-A	25	5
STJ-XXXX-MJ-25.4-4-A	25.4	4	STJ-XXXX-MHJ-25.4-4-A	25.4	4
STJ-XXXX-MJ-30.0-4-A	30	4	STJ-XXXX-MHJ-30.0-4-A	30	4
STJ-XXXX-MJ-30.30-4-	30x30	4	STJ-XXXX-MHJ-30.30-4-	30x30	4

A			A		
STJ-XXXX-MJ-40.0-3-A	40	3	STJ-XXXX-MHJ-40.0-3-A	40	3
STJ-XXXX-MJ-40.0-4-A	40	4	STJ-XXXX-MHJ-40.0-4-A	40	4
STJ-XXXX-MJ-42.0-3-A	42	4	STJ-XXXX-MHJ-42.0-3-A	42	4
STJ-XXXX-MJ-48.0-3-A	48	4	STJ-XXXX-MHJ-48.0-3-A	48	4
STJ-XXXX-MJ-50.0-4-A	50	4	STJ-XXXX-MHJ-50.0-4-A	50	4
STJ-XXXX-MJ-50.8-4-A	50.8	4	STJ-XXXX-MHJ-50.8-4-A	50.8	4

订货须知：

订货时请先选好产品型号，并写明（1）激光波长（XXXX nm）和 AOI（入射角，A，一般是 0 或 45 度），如 STJ-1064-MJ-50.8-4-45 是 45 度入射角 1064nm 波长的标准石英全反镜。

硅反射镜

产品型号	基材	Dia mm	ET mm	A deg	T %	R %	S2 ROC m	Coating
LM-SI-5.9SIS4-03	Si	15	4	45	3	99.93	3	SuperMax
LM-SI-7.5SID2-00	Si	19	2	45	0	99	平	SiDual
LM-SI-7.5SIS3-00	Si	19	3	45	0	99.93	平	SuperMax
LM-SI-7.5SIS3-05	Si	19	3	45	0	99.93	5	SuperMax
LM-SI-7.5SIS3-07	Si	19	3	45	0	99.93	7	SuperMax
LM-SI-7.5SIS4-05	Si	19	4	45	0	99.93	5	SuperMax
LM-SI-7.5SIS5-075	Si	19	5	45	0	99.93	0.75	SuperMax
LM-SI-10SIF3-00	Si	25.4	3	45	0	99	平	PFM
LM-SI-10SIF5-00	Si	25.4	5	45	0	99	平	PFM
LM-SI-10SIS3-00	Si	25.4	3	45	0	99.93	平	SuperMax
LM-SI-10SIS3-05	Si	25.4	3	45	0	99.93	5	SuperMax
LM-SI-10SIS3-10	Si	25.4	3	45	0	99.93	10	SuperMax
LM-SI-10SIS4-00	Si	25.4	4	45	0	99.93	平	SuperMax
LM-SI-10SIS5-00	Si	25.4	5	45	0	99.93	平	SuperMax
LM-SI-11SIS3-00	Si	28	3	45	0	99.93	平	SuperMax
LM-SI-11SIS6-00	Si	28	6	45	0	99.93	平	SuperMax
LM-SI-15SIS6.3-07	Si	38.05	6.3	45	0	99.93	7	SuperMax
LM-SI-15SIS6.3-7M	Si	38.05	6.3	45	0	99.93	7.5	SuperMax
LM-SI-15SIS6-00	Si	38.05	6	45	0	99.93	平	SuperMax
LM-SI-15SIS9.5-00	Si	38.05	9.5	45	0	99.93	平	SuperMax
LM-SI-15SIS9.7-00	Si	38.05	9.7	45	0	99.93	平	SuperMax
LM-SI-15SID-00	Si	38.05	4	45	0	99	平	SiDual
LM-SI-15SIF4-00	Si	38.05	4	45	0	99	平	PFM
LM-SI-15SIS4-10CC	Si	38.05	4	45	0	99.93	10	SuperMax
LM-SI-15SIS5-00	Si	38.05	5	45	0	99.93	平	SuperMax
LM-SI-15SIS6.3-00	Si	38.1	6.3	45	0	99.93	平	SuperMax
LM-SI-15SIS6.6-00	Si	38.1	6.6	45	0	99.93	平	SuperMax
LM-SI-16.1SIS5-00	Si	41	5	45	0	99.93	平	SuperMax
LM-SI-17.5SIS9.5-00	Si	44.45	9.5	45	0	99.93	平	SuperMax
LM-SI-17.5SIS9-00	Si	44.5	9	45	0	99.93	平	SuperMax
LM-SI-17.5SIS4-00	Si	44.5	4	45	0	99.93	平	SuperMax
LM-SI-19.7SIS10-00	Si	50	10	45	0	98.6	平	SuperMax
LM-SI-19.7SIS5-00	Si	50	5	45	0	98.6	平	SuperMax
LM-SI-20SIF10-00	Si	50.8	10	45	0	99	平	PFM
LM-SI-20SIS10-00	Si	50.8	10.2	45	0	99.93	平	SuperMax
LM-SI-20SIS10-00MA	Si	50.8	10	45	0	99.93	平	SuperMax
LM-SI-20SIS5-00	Si	50.8	5.1	45	0	99.93	平	SuperMax
LM-SI-20SIS9.5-00	Si	50.8	9.5	45	0	99.93	平	SuperMax
LM-SI-26.8SIS20-00M	Si	68	20	45	0	99.93	平	SuperMax

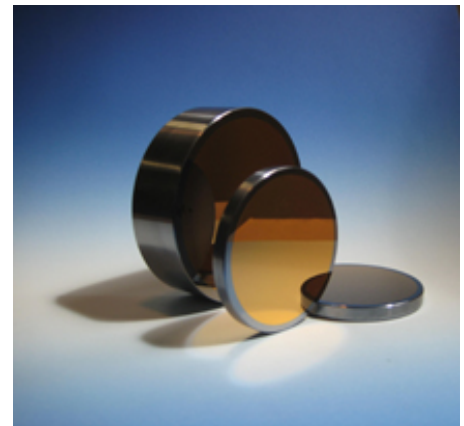
LM-SI-30SIS6.35-00	Si	76.2	6.35	45	0	99.93	平	SuperMax
LM-SI-30SMA12.7-00	Cu	76.2	12.7	45	0	98.6	平	SuperMax

说明：A：入射角； ET：边缘厚度； T(%)：透过率； R (%)：反射率； ROC：曲率半径。

10. 6μm 专用硅转镜

- 45° 入射角
- 10.6 μm 镀膜，反射率 > 99.6%
- 10.6 μm 吸收率 < 0.30%

产品型号	直径	厚度
LM-SI-TMS-0512-EM	0.500"	0.120"
LM-SI-TMS-0712-EM	0.750"	0.120"
LM-SI-TMS-0912-EM	0.875"	0.120"
LM-SI-TMS-1012-EM	1.000"	0.120"
LM-SI-TMS-1112-EM	1.100"	0.120"
LM-SI-TMS-1512-EM	1.500"	0.120"
LM-SI-TMS-1516-EM	1.500"	0.160"
LM-SI-TMS-1816-EM	1.750"	0.160"
LM-SI-TMS-2020-EM	2.000"	0.200"
LM-SI-TMS-2525-EM	2.500"	0.250"
LM-SI-TMS-3025-EM	3.000"	0.250"
LM-SI-TMS-4035-EM	4.000"	0.350"



10. 6μm+红光硅镜

- 45° 入射角
- 10.6 μm 镀膜，反射率 > 99.7%；红光 633nm 和 650nm 反射率 > 85%
- 10.6 μm 吸收率 < 0.30%

Model Number	Diameter	Thickness
LM-SI-TMS-0512-DBMR	0.500"	0.120"
LM-SI-TMS-0712-DBMR	0.750"	0.120"
LM-SI-TMS-0912-DBMR	0.875"	0.120"
LM-SI-TMS-1012-DBMR	1.000"	0.120"
LM-SI-TMS-1112-DBMR	1.100"	0.120"
LM-SI-TMS-1512-DBMR	1.500"	0.120"
LM-SI-TMS-1516-DBMR	1.500"	0.160"
LM-SI-TMS-1816-DBMR	1.750"	0.160"
LM-SI-TMS-2020-DBMR	2.000"	0.200"
LM-SI-TMS-2525-DBMR	2.500"	0.250"
LM-SI-TMS-3025-DBMR	3.000"	0.250"
LM-SI-TMS-4035-DBMR	4.000"	0.350"

铜镜



产品型号	M	Dia mm	ET mm	A deg	T %	R %	S2 ROC m	镀膜
LM-CU-11SMA6-00	Cu	28	6	45	0	99.93	平	SuperMax
LM-CU-15NCA8-00	Cu	38	8	45	0	99.93	平	NiCu
LM-CU-15NCW15-00	Cu	38	15	45	0	98.6	平	NiCu
LM-CU-D38-T10-A45	Cu	38	10	45	0	98.6	平	NiCu
LM-CU-15NCA10-00	Cu	38	6	45	0	98.6	平	NiCu
LM-CU-15NCA6-00	Cu	38	6	45	0	98.6	平	SuperMax
LM-CU-15SMA6-00	Cu	38	6	45	0	99.93	平	SuperMax
LM-CU-15SMA6-15	Cu	38.05	6	45	0	99.93	15	SuperMax
LM-CU-19.7NCA10-00	Cu	50	10	45	0	98.6	平	NiCu
LM-CU-19.7NCW25-00	Cu	50	25	45	0	98.6	平	NiCu
LM-CU-19.7SMA10-1000CX	Cu	50	6	45	0	98.6	平	SuperMax
LM-CU-19.7SMA5-00	Cu	50	5	45	0	98.6	平	SuperMax
LM-CU-19.7SMA9-00	Cu	50	9	45	0	98.6	平	SuperMax
LM-CU-20NCA5-00	Cu	50.8	5	45	0	98.6	平	NiCu
LM-CU-20SMA5-00	Cu	50.8	5	45	0	98.6	平	SuperMax
LM-CU-23.6NCA10-00	Cu	60	10	45	0	98.6	平	NiCu
LM-CU-23.6SMA6-00	Cu	60	6	45	0	98.6	平	SuperMax
LM-CU-29.5NCA15-00	Cu	75	15	45	0	98.6	平	NiCu
LM-CU-29.5NCW25-00	Cu	75	25	45	0	98.6	平	NiCu
LM-CU-29.5SMA17-00	Cu	75	17	45	0	98.6	平	SuperMax

说明：A：入射角； ET：边缘厚度； T(%)：透过率； R (%)：反射率； ROC：曲率半径。

钼镜



产品型号	M	Dia mm	ET mm	A deg	T %	R %	S2 ROC m	Coating
LM-MO-5.9M02-00	Mo	15	2	0	0	98.5	flat	Uncoated
LM-MO-15M06-00	Mo	38	6	45	0	98.5	flat	Uncoated
LM-MO-17.5M08-00	Mo	44.5	8	45	0	98.5	flat	Uncoated
LM-MO-19.7M02-00	Mo	50	2	45	0	98.5	flat	Uncoated
LM-MO-19.7M03-00	Mo	50	3	45	0	98.5	flat	Uncoated
LM-MO-19.7M05-14	Mo	50	5	45	0	98.5	flat	Uncoated
LM-MO-19.7M06-00	Mo	50	6	45	0	98.5	flat	Uncoated
LM-MO-20M05-00	Mo	50.8	5.1	45	0	98.5	flat	Uncoated
LM-MO-23.6M010-00	Mo	60	10	45	0	98.5	flat	Uncoated
LM-MO-29.5M015-00	Mo	75	15	45	0	98.5	flat	Uncoated

说明：A：入射角； ET：边缘厚度； T(%)：透过率； R (%)：反射率； ROC：曲率半径。